

Guest Accommodations

A variety of on-campus guest accommodations are available for family and friends who wish to visit residents of Landis Homes. To check availability or to make a reservation, call (717) 569-3271, ext. 3079 or email ReservationOvernight@landis.org.

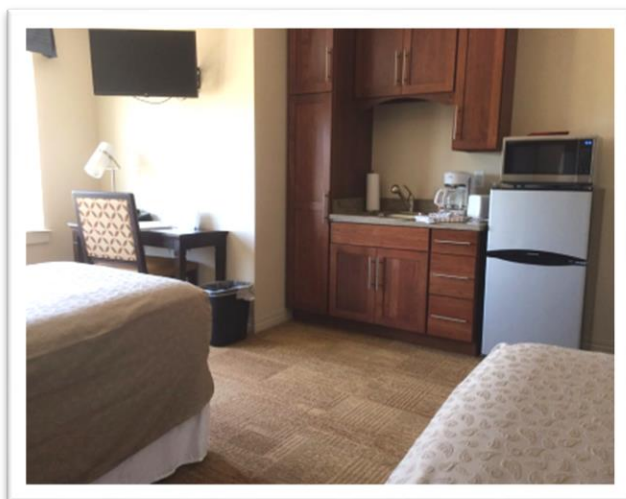
Bed linens and towels are provided in all accommodations. Free Wi-Fi available. No pets permitted.

Guest Rooms at Crossings East 201 and 301

Rate: \$65/night for one adult + \$10/night for each additional person 13 years & up (12 and under are free)

Bedroom with kitchenette and large private bath, including:

- Walk-in shower
- Two twin beds; roll-a-way cot available upon request for a one-time \$10 fee
- Kitchen sink, apartment-size refrigerator, microwave, coffee pot, toaster, plates, cups, and utensils
- TV, two padded chairs, desk with lamp



Entry locations: Key fob will provide access at the Crossings East entrance door off Amaryllis Drive (7 on Campus Map) or in the stairwells at the ends of the building. This key fob also opens the door to the guest room. Hold the key fob against the black sensor above the doorknob.

Guest Rooms at Westview 101 and 108

Maximum Occupancy: 2 persons, 13 years or older; no children under 13

Rate: \$60/night for one adult + \$10/night for each additional person

Bedroom & private bath, including:

- Two twin beds, dresser, nightstand
- Apartment-size refrigerator, microwave
- TV, padded chair

Coffee available for purchase in dining areas

No cots permitted due to limited space and fire/safety code.



Entry locations: Key fob will provide access at the main Westview entrance next to West Community Room on ground floor (❶ on Campus Map).

House of Grace cottage

Rate: \$75/night for one adult + \$10/night for each additional person 13 years & up (12 and under are free)



Combined bedroom / living room, separate kitchen, and private bath, including:

- Queen bed and queen pull-out sofa bed; roll-a-way cot available upon request for a one-time \$10 fee
- Kitchen area equipped with table and 4 chairs, apartment-size refrigerator, microwave, coffee pot, toaster, plates, cups, and utensils
- Dresser, nightstand, two desks, TV, sofa
- Porch with two chairs and a bench

The House of Grace is located next door to Cottage #47 (❸ on Campus Map)

Recreational Vehicle sites

Rate: \$20/night

Two available RV sites located near the pond (❷ on Campus Map), including:

- Electric and water hookups (no sewer hookup)
- Refrigerator (designated for use by renters of RV areas) is available in the nearby pavilion.