



# Organizational Chart

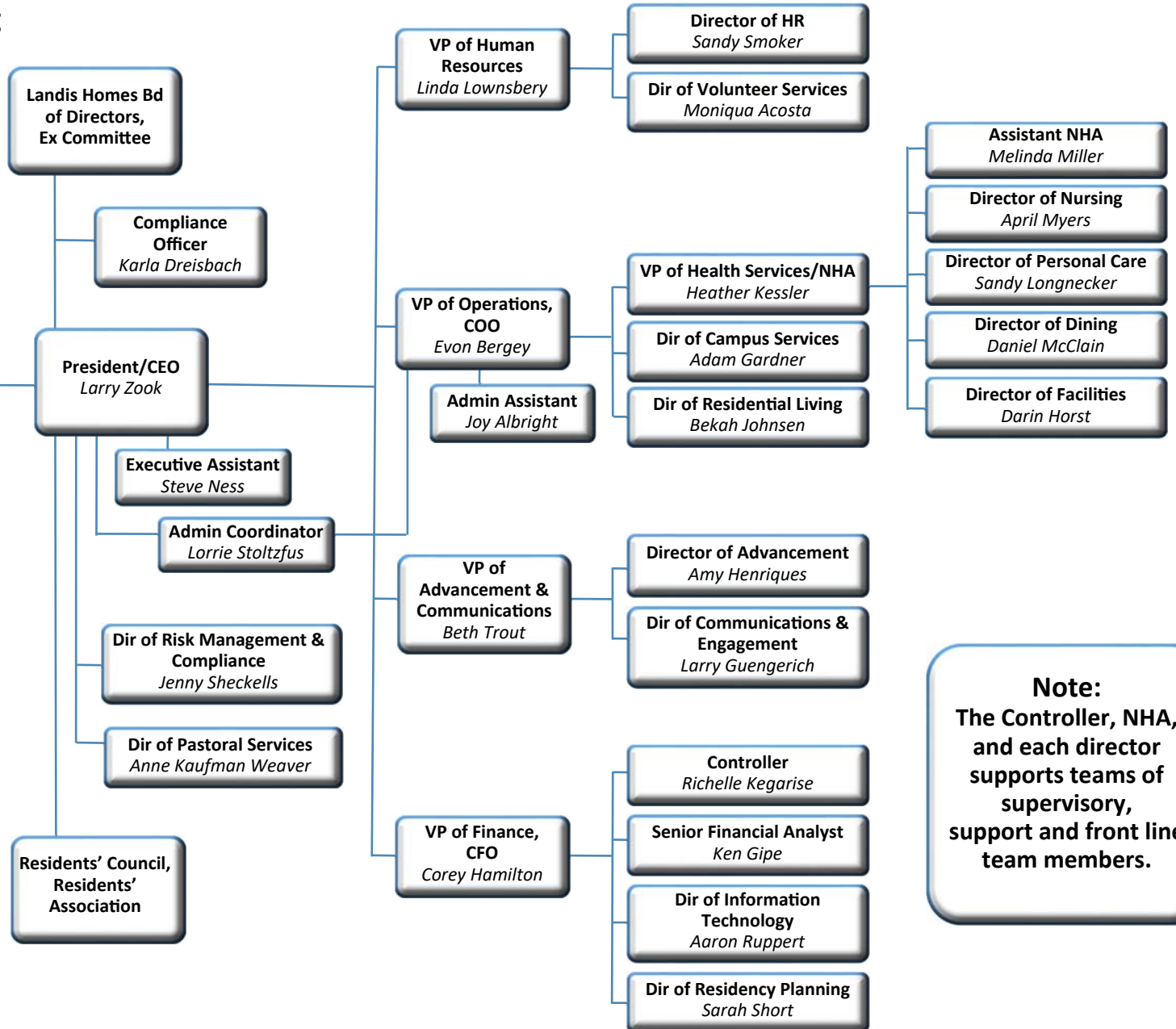
Revised October 12, 2022

**An Affiliate of**  
*Landis Communities*  
**which is a Ministry of**  
*LMC, A Fellowship of*  
*Anabaptist Churches*  
 &  
*Atlantic Coast Conference*  
*of Mennonite Church USA*

---

Landis Homes Board  
 LH President/CEO

- Leadership Team
- Human Resources
- Finance
- Information Technology
- Advancement & Fundraising
- Communications & Church Relations
- Risk Management and Compliance



**Note:**  
 The Controller, NHA,  
 and each director  
 supports teams of  
 supervisory,  
 support and front line  
 team members.