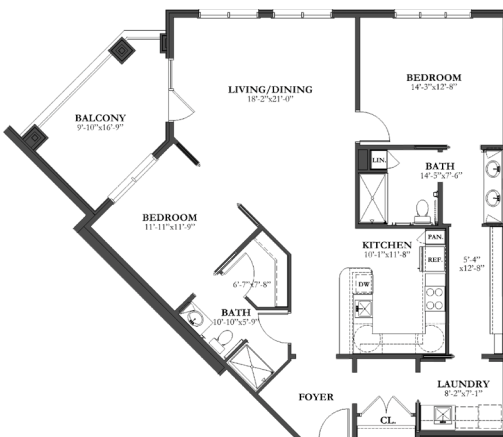




# The Best of Both Worlds

**H**ybrid Homes provide a unique living option that combines the best of both worlds: cottage homes and apartment living. Multiple exposures, garage parking, outdoor living and an absence of corridors are like a cottage home. Apartment-like features include indoor access to common areas and opportunities for social connections in shared living spaces including a hearth room and a community room.

Located between a lush wetland and a wooded area, each home has features to help bring the outdoors in. They include a large patio for outdoor living as well as many windows which provide both inviting views and abundant natural light. The three-story hybrid household is comprised of ground floor parking with six hybrid homes on each of the two floors above.



**Hybrid Home Type C**  
2 BR, 2 Bath / 1378 SF

There are several plans ranging from 862-1636 sq. ft.



1001 East Oregon Road • Lititz PA 17543  
[www.LandisHomes.org](http://www.LandisHomes.org)  
 717-581-3935



Our Hybrid Homes carry a Gold LEED (Leadership in Energy and Environmental Design) certification. The homes employ sustainable design strategies that include rain water harvesting, geothermal heating and cooling and measures that ensure indoor air quality control.

## HYBRID HOME FLOOR LAYOUT



The Hybrid Homes are connected by various walking paths and a pedestrian bridge spanning a restored stream. Walkways also lead to other households and to a variety of destinations including resident gardens, Leaman Woods and a local supermarket with restaurant (Oregon Dairy).

Residents have easy access on campus to our wellness center which includes a heated indoor pool, hot tub, wellness studio, and fitness center. The Hybrid Homes are also located close to the general store, pharmacy, hair salon, bank, and three dining venues.

Our campus shuttle service, staffed by resident volunteers, provides a convenient way for residents of Hybrid Homes to effortlessly access all of the campus amenities.

## GROUND FLOOR PARKING with Community Room or 1 BR home)

