

Primrose

2 BR, 2 BA, SUNROOM | 1,478 SF

- Living: 16'10" x 15'0"
- Dining: 7'1" x 9'9"
- Primary Bedroom: 13'3" x 14'10"
- Second Bedroom: 13'0" x 12'4"
- Garage: 24'4" x 20'2"
- Sunroom: 12'0" x 11'4"

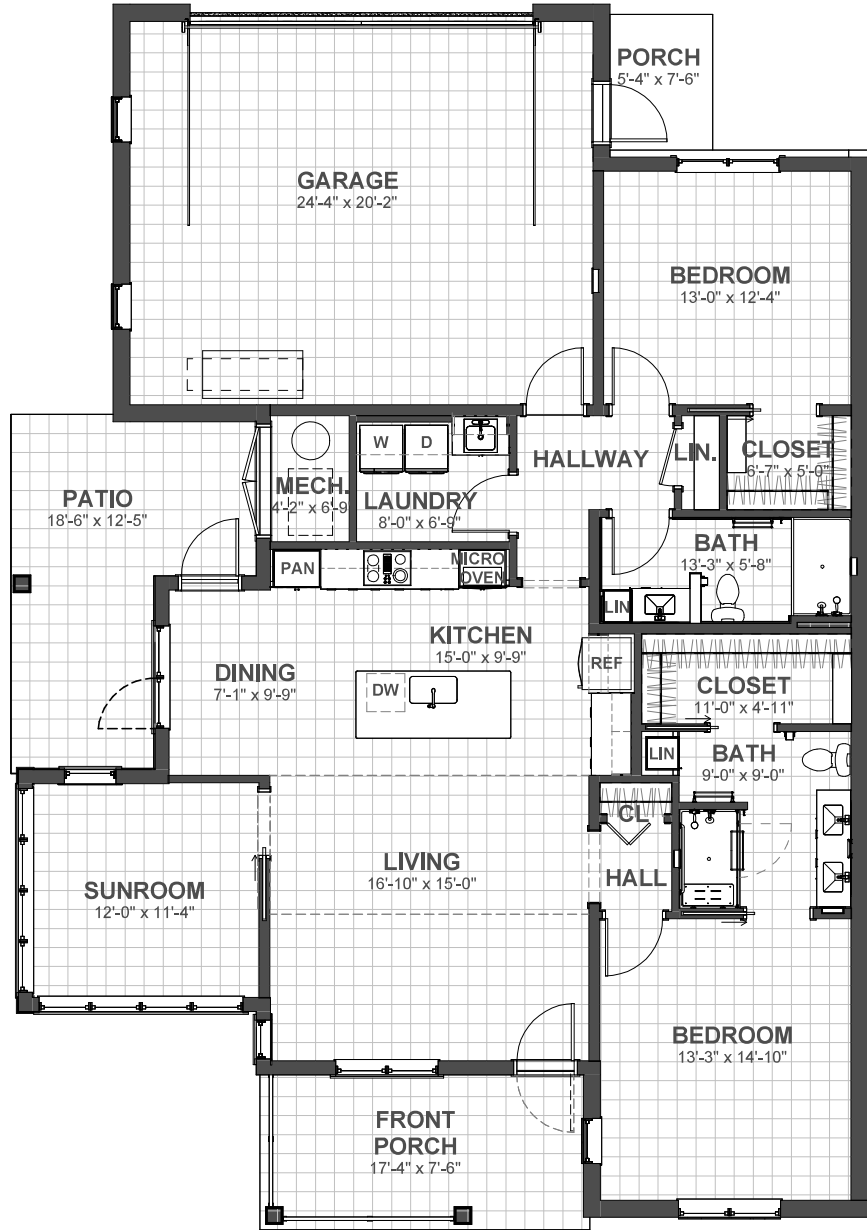


Renderings are artistic interpretation only. All materials, colors and designs are subject to change.

Wildflower
HOMES

Primrose

2 BR, 2 BA, SUNROOM | 1,478 SF



1 square = 1 foot

CEILING HEIGHTS

LIVING
10'8" TO 14'0" (sloped)

DINING
10'8" TO 14'0" (sloped)

KITCHEN
9'0"

**PRIMARY
BEDROOM**
9'0"

**SECOND
BEDROOM**
9'0"

SUNROOM
9'0"

**OTHER
SPACES**
8'0"

Wildflower
HOMES

Poppy

2 BR, 2 BA | 1,333 SF

- Living: 16'10" x 15'0"
- Dining: 6'9" x 9'10"
- Primary Bedroom: 13'3" x 14'10"
- Second Bedroom: 13'1" x 12'4"
- Garage: 18'0" x 20'2"

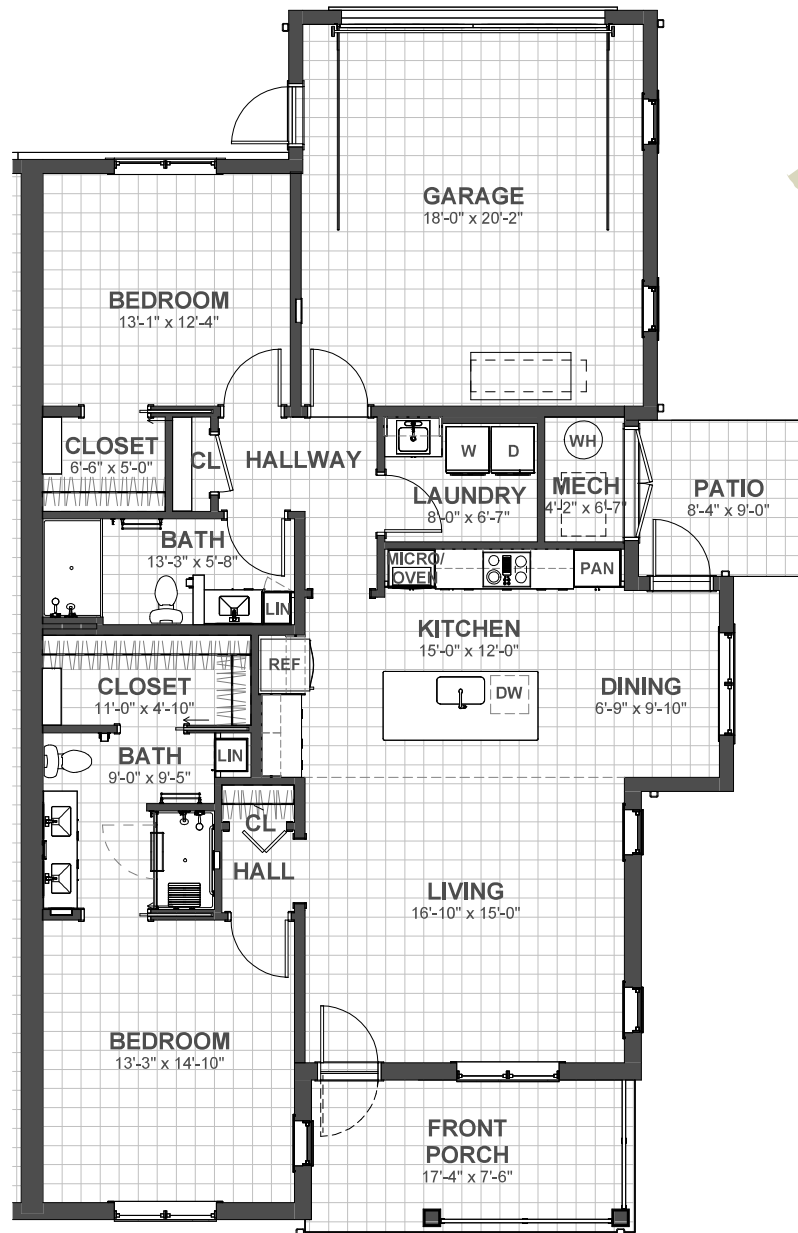


Renderings are artistic interpretation only. All materials, colors and designs are subject to change.

Wildflower
HOMES

Poppy

2 BR, 2 BA | 1,333 SF



1 square = 1 foot

CEILING HEIGHTS

LIVING
10'8" TO 14'0" (sloped)

DINING
10'8" TO 14'0" (sloped)

KITCHEN
9'0"

**PRIMARY
BEDROOM**
9'0"

**SECOND
BEDROOM**
9'0"

SUNROOM
9'0"

**OTHER
SPACES**
8'0"

Wildflower
HOMES