

Residential Living OPTIONS

A Home for Every Taste

WELCOME TO LANDIS HOMES



Landis Homes brings together the best parts of picturesque Lancaster County. The 114-acre countryside campus is just a short drive from culturally rich Lancaster city and the bustling town of Lititz. The community of welcoming neighbors invests in deep relationships, wellness, and a vibrant lifestyle. Our beautiful campus offers many features that fill residents' moments with art, nature, community, and care.

Included Features

- Utilities, including TV service and internet (telephone services are not included)
- Real Estate Taxes
- Maintenance of Building & Appliances
- Grounds Maintenance
- Scheduled Shopping Trips
- Pastoral Services
- Social & Recreational Activities
- 24-Hour Security and Emergency Response
- Priority Access to Healthcare & Personal Care
- Social Services



CONVENIENCES AND ACTIVITIES

Celebrate all that Landis Homes has to offer! At Landis Homes, you will find a wide range of services and amenities to help you flourish on our campus and live an enriched and engaged lifestyle!

- General Store
- Pharmacy
- Bank (Full service including safe deposit boxes and ATM)
- On Campus Shuttle Service
- Lounges, Public Meeting Areas, Dining Rooms
- Art Galleries
- Libraries
- Resident Business Center
- Walking Paths, Pavilion, Woods
- Closed Circuit Television Channel
- Online Resident Apps
- Indoor Pool, Hot Tub
- Fitness Center, Exercise Studio
- Billiards, Shuffleboard, Bocce, Table Tennis
- Entertainment & Musical Programs
- Wood Shop, Arts & Crafts, Quilting
- Model Railroading
- Garden Plots
- Worship Services, Bible Study
- Volunteer Opportunities
- Resident Clubs







Floor Plan GALLERY

A sampling of your living choices

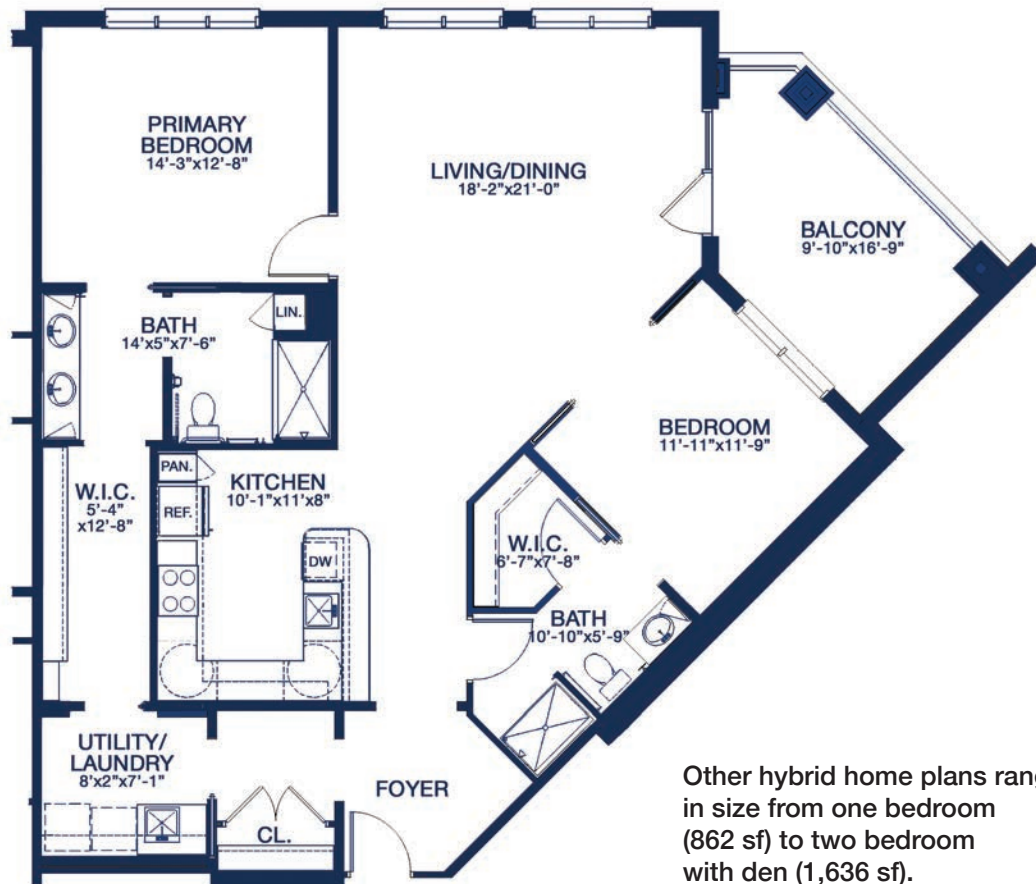


HYBRID HOMES



Hybrid Home Type C | Two Bedroom | 1,378 sf

Includes garage parking and additional storage

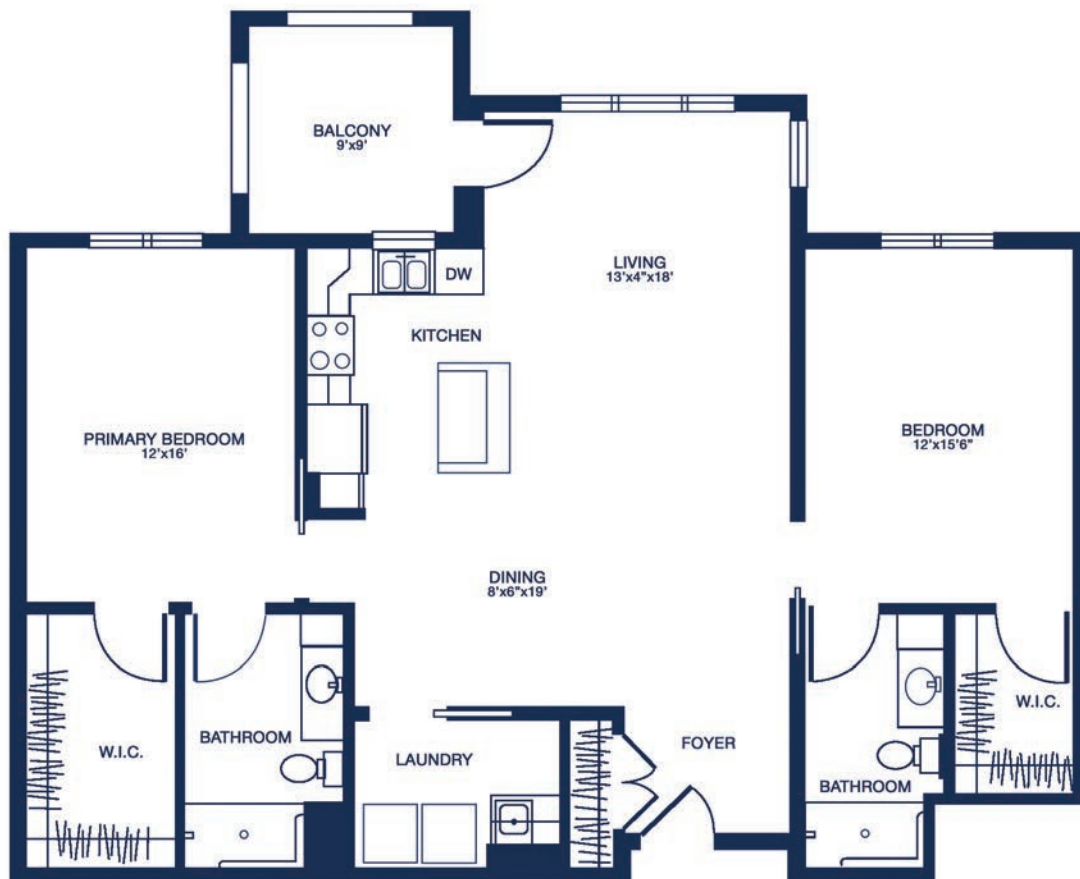


Other hybrid home plans range in size from one bedroom (862 sf) to two bedroom with den (1,636 sf).

CROSSINGS APARTMENTS



Crossings Apartment Everett | Two Bedroom | 1,300 sf
Includes garage parking and additional storage

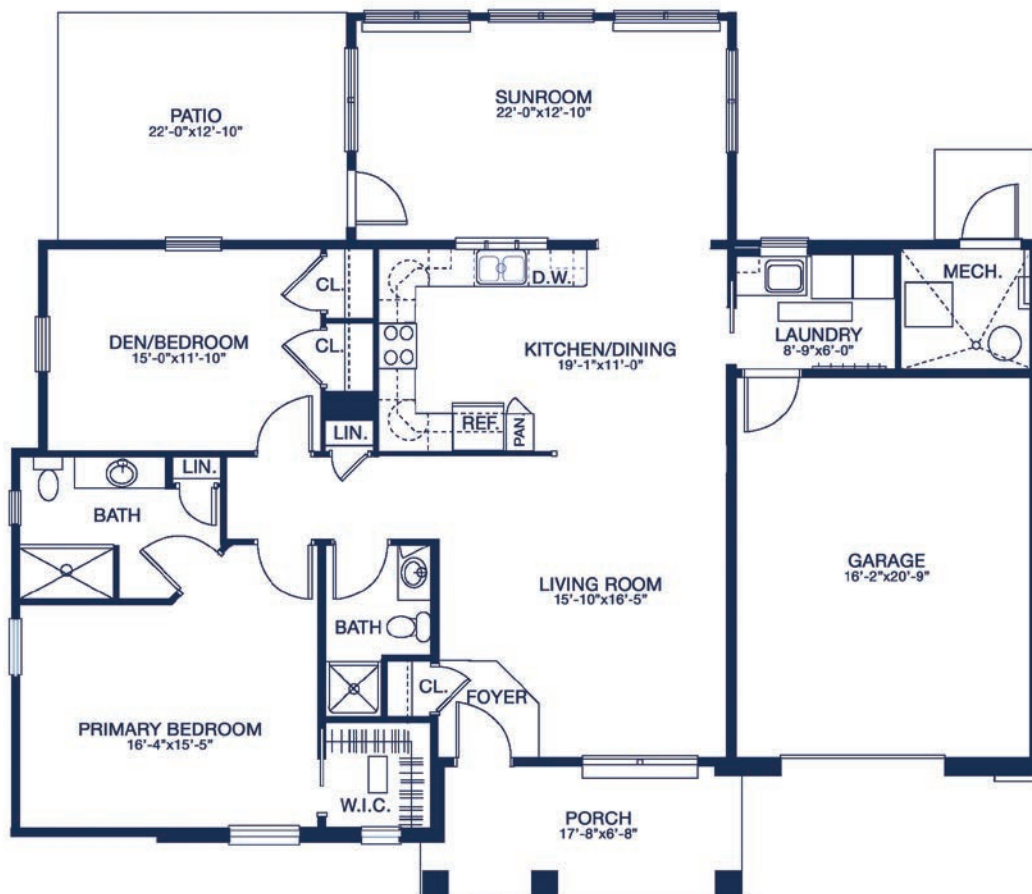


Other Crossings apartment plans range in size from one bedroom with den (1,115 sf) to two bedroom with den (1,550 sf).

SOUTH CAMPUS COTTAGES



South Campus Cottage | Standard Two Bedroom with Sunroom | 1,464 sf



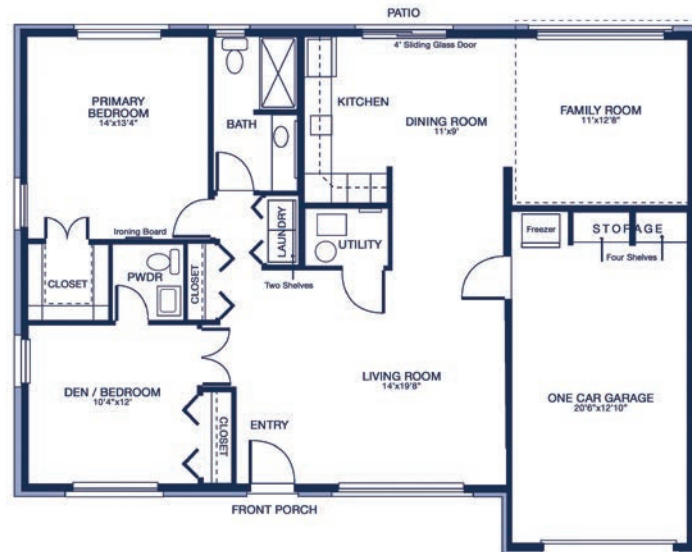
Other south campus cottage plans range in size from a two bedroom (1,212 sf) to two bedroom with sunroom and two-car garage (1,556 sf).

WEST/NORTHWEST/EAST CAMPUS COTTAGES

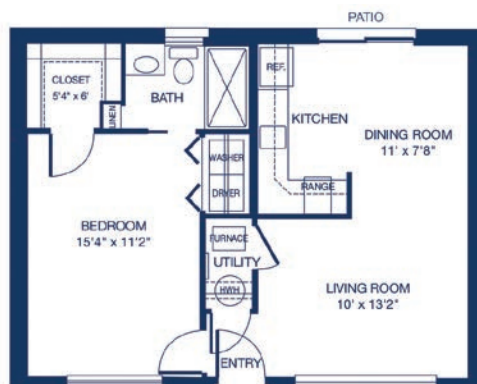


Northwest Cottage | Two Bedroom with Family Room | 1,294 sf

Other two bedroom cottage plans range in size from two bedroom (843 sf) to two bedroom with sunroom (1,219 sf).



West Cottage | One Bedroom | 660 sf

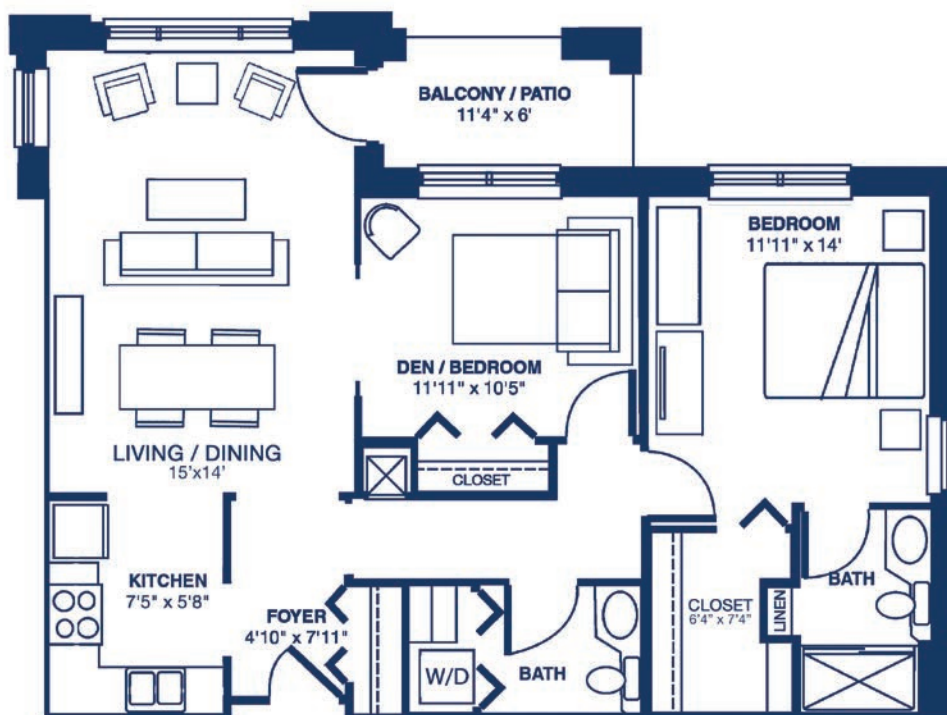


Other plans range in size from a one bedroom with garage (571- 690 sf).

HARVEST VIEW APARTMENTS | Two Bedrooms



Harvest View Apartment | Two Bedroom | 981 sf
Includes additional storage

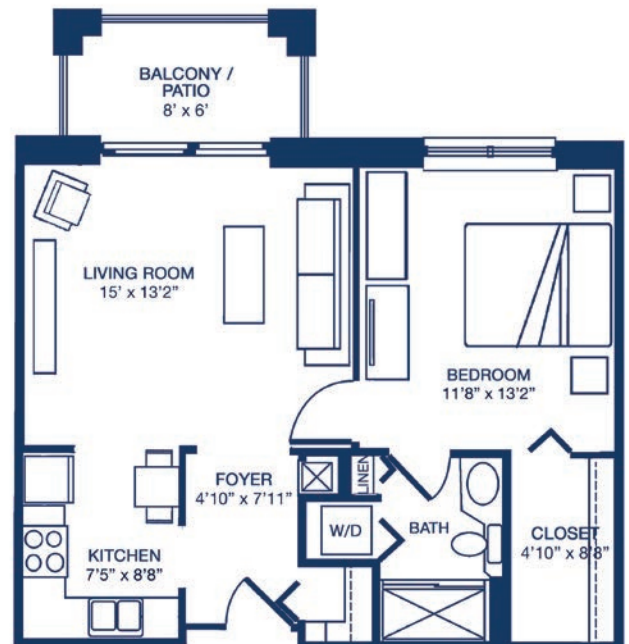
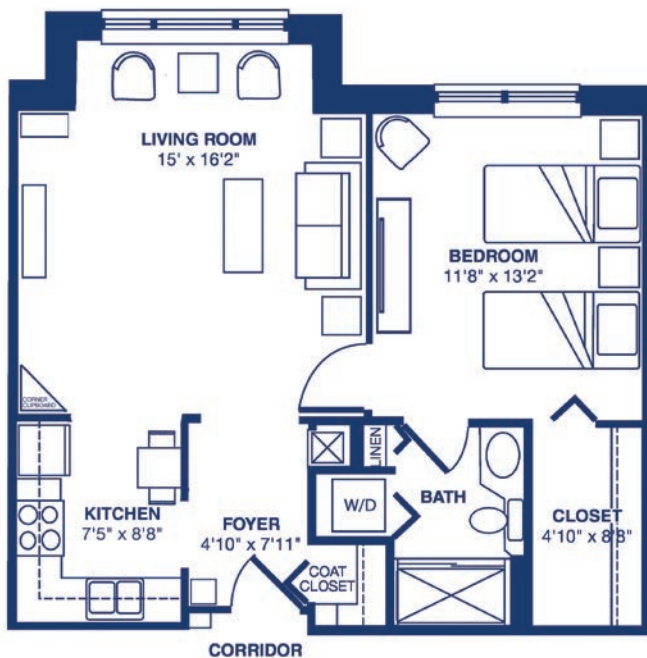


Other Harvest View two-bedroom plan is (946 sf).



Harvest View Apartment
One Bedroom with Bay Window
678 sf
 Includes additional storage

Harvest View Apartment
One Bedroom with Balcony/Patio
639 sf
 Includes additional storage

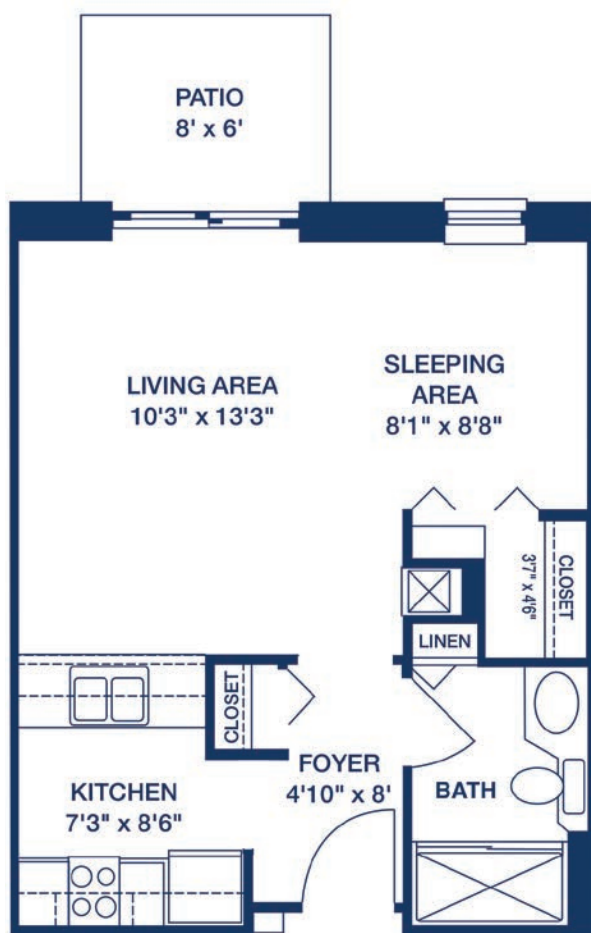


Other plan is a one bedroom with den (770 sf).

HARVEST VIEW APARTMENTS | Studio



Harvest View Apartment | Studio A | 436 sf
Includes additional storage



Other plan is a Studio B (611 sf).

WESTVIEW APARTMENT AND HOMEVIEW SUITE



Westview Apartment One Bedroom | 575 sf

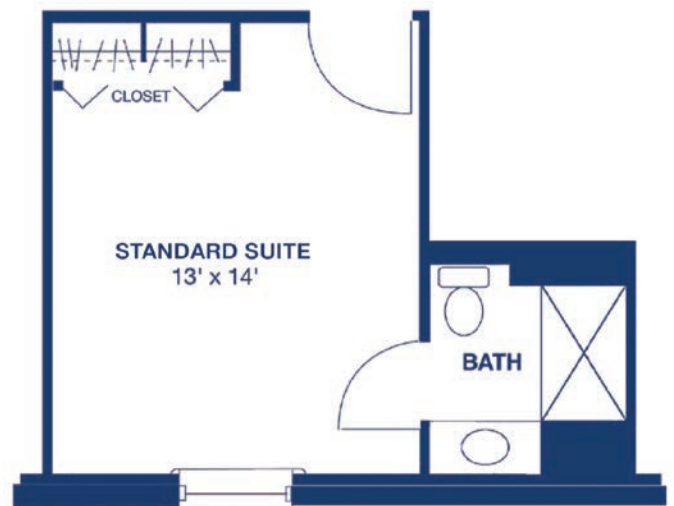
Includes additional storage



Other Westview apartment plans range in size from a studio (372 sf) to a two bedroom (792 sf).

Homeview Standard Residential Suite

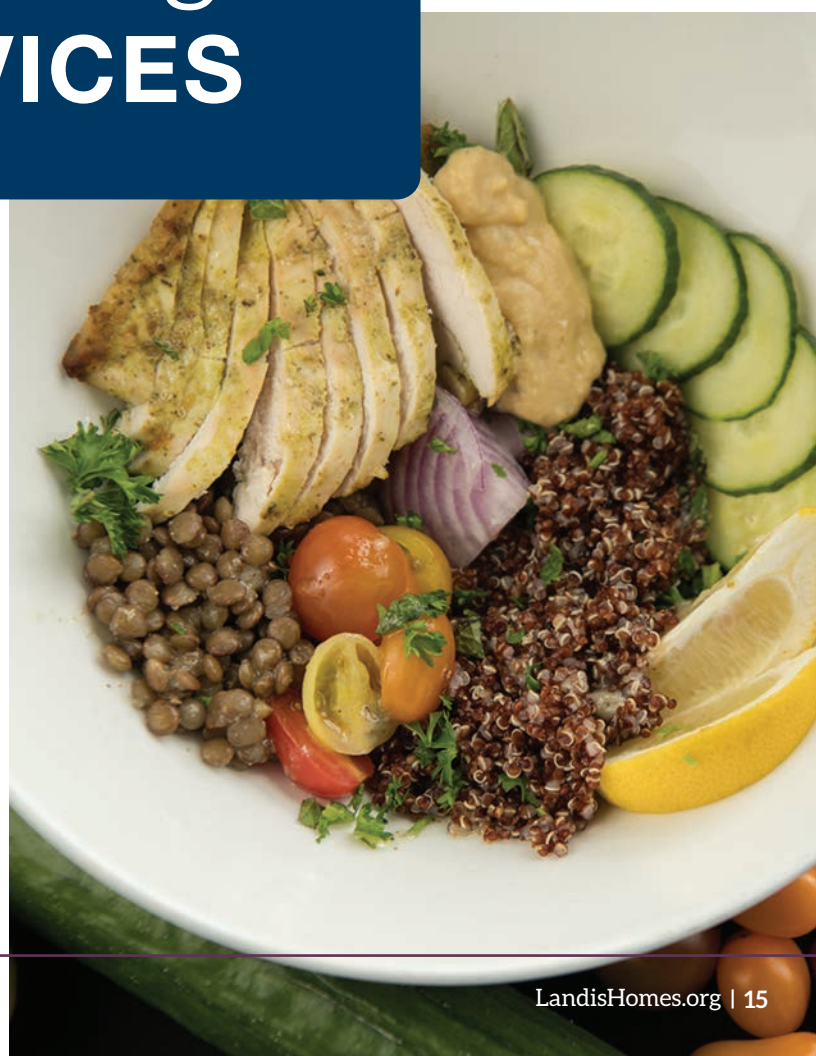
Residential suites include three meals per day, housekeeping, laundry service, and an emergency alert system. There is no entrance fee and there are large and one bedroom apartment sized suites also available.







A Sampling of SERVICES



SERVICES AVAILABLE FOR ADDITIONAL FEE

If the need arises, a full range of support services offer peace of mind to residents and their families.

- Dining Options
- Housekeeping & Laundry Services
- Landis Adult Day Services
- Landis at Home
- Bookkeeping
- Hair Salon & Spa
- Educational & Leisure Bus Trips
- Pathways Institute for Lifelong Learning®
- Dry Cleaning Services
- Rehabilitation
- Podiatrist & Audiologists
- Medicare Home Health Services, Hospice, Behavioral Health
- Laboratory Services
- Emergency Alert (one-time fee & no monthly charge)
- Guest Accommodations

LEVELS OF CARE AT LANDIS HOMES

Landis Homes combines residential living options on the same campus as Personal Care, Healthcare, and Memory Care.

PERSONAL CARE

Personal Care households (Aspen, Birch, Cedar, Lititz) encourage independence and provide limited assistance and support. This assistance includes nursing oversight and management of physical, social, spiritual and emotional needs. Several levels of Personal Care are available and priced according to the degree of support needed. Personal Care, for persons who require a secured memory support household, is offered in Lititz House.

HEALTHCARE

Healthcare households (Conestoga, Lancaster, Oregon, Manheim and Ephrata) are for persons requiring 24-hour care and supervision under the direction of a physician. Healthcare rooms are located within close proximity to dining rooms, activity areas, living rooms, rehabilitation services, and a chapel.

Healthcare offers rehabilitation after surgery or illness and extended care when ongoing assistance is needed. An individualized care plan is prepared for each resident, with input from the resident, nursing, social services, pastoral services, life enrichment, dining services, family members and the provider. Residents have access to on-site physical, speech, and occupational therapies as ordered by a practitioner. Healthcare for persons in need of memory support is offered in Lancaster House.

MEMORY SUPPORT

The Memory Support Center nurtures residents with individual programming by a specially trained team in a secure setting. These dementia care areas are designed to minimize noise and distractions. Each living area includes a country kitchen, dining area, living room and family room. Enclosed courtyards allow residents to enjoy the outdoors and to take part in activities such as picnics, lawn games, gardening, and other outdoor events.



ENRICHING SERVICES AND LEARNING OPPORTUNITIES

Offered Through Landis Communities

Landis at Home, a licensed home care agency, offers a variety of services to persons in their homes on the Landis Homes campus or within a 15-mile radius. Services include medication reminders, support with bathing and dressing, meal preparation, housekeeping, companionship, transportation, and nurse case management to help maintain each person's overall health. Services can be used for a short visit or up to 24 hours a day, seven days a week. **LandisAtHome.org**.

Landis Adult Day Services are available Monday through Friday from 7 AM to 5 PM. The center on the Landis Homes campus offers a warm and safe environment. In addition to support with health concerns and medications there are fun, meaningful things to do. The center is jointly sponsored by Landis Communities and the Lancaster County Office of Aging and is licensed by the Pennsylvania Department of Aging. **LandisAdultDay.org**.

Friends Life Care collaborates with Landis Communities to offer flexible and comprehensive long-term care plans, including expert care coordination, home care services, and financial benefits for those aged 40-85 living in Lancaster and Lebanon Counties. **FriendsLifeCare.org/Landis**.

The Pathways Institute for Lifelong Learning® is for persons age 55 and above in Lancaster County and surrounding areas to engage in educational, cultural enrichment, and service-learning opportunities. Most classes are held on the campus of Landis Homes. Some special events and unique opportunities are held off-campus through field trips to local historical sites and other places of interest. **ThePathwaysInstitute.org**.

APPLICATION PROCESS – 3 Easy Steps

STEP 1 Prospective residents and their family are encouraged to visit Landis Homes for a personal visit. The Residency Planning Team will discuss the services and programs available at Landis Homes as well as the fees.

Appointments may be made by contacting:

Residency Planning

To discuss: Cottages, Hybrid Homes, Apartments, and Suites

717.581.3935 | residencyplanning@landis.org

STEP 2 There is no fee required to submit an Application for Residency. Completed applications are reviewed by Landis Homes for approval. Approved applicants names are added to the General Waiting List which is for people who are undecided about the timing of a future move to Landis Homes.

STEP 3 Applicants who are ready to move within a year can join the Priority Program. There is a refundable \$1000 fee to go on the Priority List. When an accommodation becomes available, those on the Priority List will be contacted.



Landis Homes complies with all federal, state and local Fair Housing laws and does not discriminate against any applicant seeking admission on the basis of race, religion, national origin, sex, ancestry, color, disability or handicap. However, if the applications for admission are in excess of the facilities available, qualified applicants are placed on a waiting list.



RATES

Residential Living Rate Ranges | *Effective – July 1, 2024*

WEST COTTAGES (571-1294 sq. ft.)

	Entrance Fees	Single Occupancy*
1 Bedroom	\$99,000 - \$132,000	\$1,215 - \$1,374
2 Bedrooms	\$142,000 - \$227,000	\$1,436 - \$1,922
2 Bedrooms w/Family Room	\$199,000 - \$254,000	\$1,772 - \$2,118

SOUTH CAMPUS COTTAGES (1212-1556 sq. ft.)

	Entrance Fees	Single Occupancy*
2 Bedrooms	\$287,000 - \$313,000	\$2,019 - \$2,054
2 Bedrooms w/Family Room	\$348,000 - \$404,000	\$2,283 - \$2,611

HYBRID HOMES (862-1636 sq. ft.)

	Entrance Fees	Single Occupancy*
1 Bedroom	\$196,000 - \$206,000	\$1,741
1 Bedroom w/Den	\$290,000	\$2,341
2 Bedrooms	\$314,000	\$2,402
2 Bedrooms w/Den	\$368,000	\$2,718

Crossings Apartments (1115-1550 sq. ft.)

	Entrance Fees	Single Occupancy*
1 Bedroom w/Den	\$279,000 - \$295,000	\$2,222
2 Bedrooms	\$320,000 - \$347,000	\$2,393 - \$2,541
2 Bedrooms w/Den	\$387,000	\$2,734

West Apartments (357-981 sq. ft.)

	Entrance Fees	Single Occupancy*
Studios	\$58,000 - \$121,000	\$1,050 - \$1,453
1 Bedroom	\$98,000 - \$151,000	\$1,253 - \$1,496
1 Bedroom w/Den	\$171,000	\$1,693
2 Bedroom	\$132,000 - \$220,000	\$1,396 - \$2,006

Residential Suites: No Entrance Fee

	Daily Rate Per Person
Standard	\$118.00
Large, occupied by two persons	\$106.00
Large, occupied by single person	\$171.00
Apartment, occupied by two persons	\$118.00
Apartment, occupied by single person	\$191.00

**Add \$247 for second person/double occupancy*



LandisHomes.org

1001 East Oregon Rd
Lititz, PA 17543
717.569.3271

**LANDIS HOMES
RESIDENCY PLANNING**

717.581.3935
residencyplanning@landis.org

