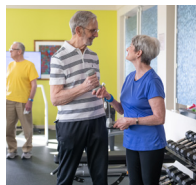


"Main Street" Campus Map



Campus Map Points of Interest



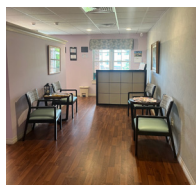
Fitness & Aquatic Center

State-of-the-art fitness center and warm water aquatic center. Many classes with varying levels of intensity are available.



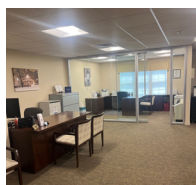
Owl Hill Bistro

The bistro offers made-to-order pizzas, salads, sandwiches, roasted meats, desserts, and many other delicious dishes.



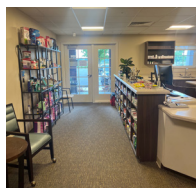
Hair Salon / Spa

PS Salon & Spa staffs our salons with licensed beauticians providing services for men and women. Licensed massage therapists are also available.



Bank / ATM

PeoplesBank provides banking services and safe deposit boxes are available. An ATM is located right outside the entrance.



Pharmacy

Phoebe Pharmacy supports a full complement of pharmacy services including prepackaged medication packets. Open Monday-Friday.



Landis at Home

This PA-licensed Home Care agency provides in-home services on a pre-scheduled, fee-for-service basis for short or long term needs.



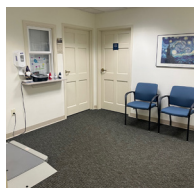
Library

The library is home to books, periodicals, reference sources, magazines, newspapers, and large print books.



General Store

This volunteer-run store carries a large variety of items, including refrigerated and frozen foods, produce, snacks, household items, and other staples.



Physician Suites

LGHP Geriatrics and Penn State Health Medical Groups provides services on campus by appointment.



Chapel

Daily prayer services, Sunday worship, concerts, lectures, and films are held in the West Bethany Chapel.



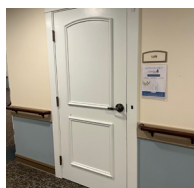
Audiology Suite

Providers offer services on campus by appointment. Check with Residential Living Nurses for more information.



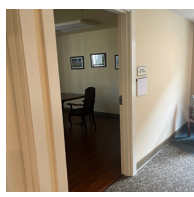
Physical Therapy

Symbria Rehab offers licensed therapists who practice in a center fully equipped to provide physical, occupational, and speech therapies.



Lab Suite

Providers deliver services on campus by appointment. Check with Residential Living Nurses for more information.



Podiatry Suite

Providers offer routine services on campus by appointment. Check with Residential Living Nurses for more information.